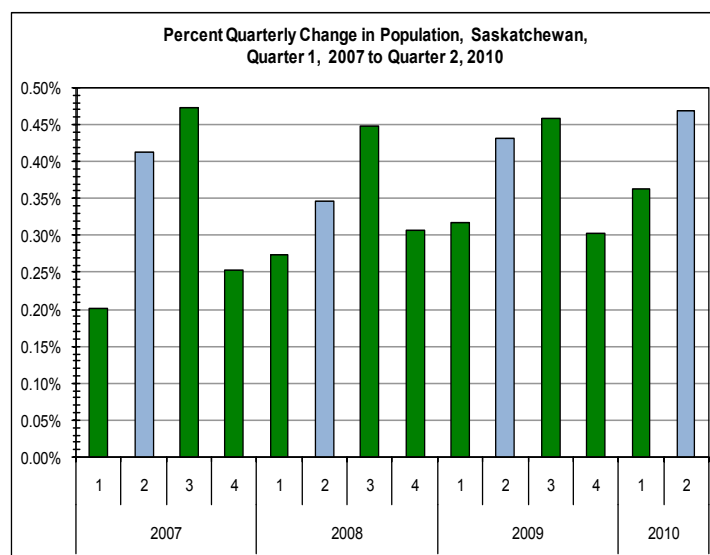
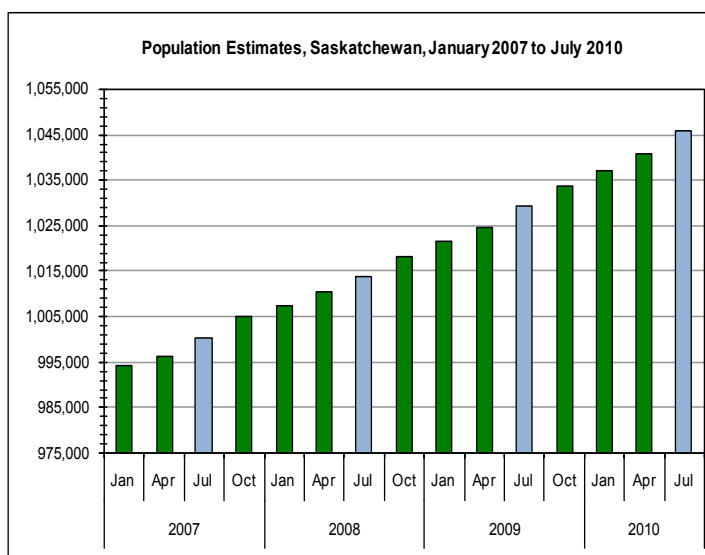


Saskatchewan Population Report — Quarter 2, 2010

September 29, 2010

- Saskatchewan's population was estimated at 1,045,622 people as of July 1, 2010, an increase of 4,887 people during the second quarter, for 17 consecutive quarterly increases.
- Saskatchewan's population gains are attributed to a natural increase of 1,423 (29.1% of population gains), net inter-provincial migration of 1,027 (21.0%), and net international migration of 2,437 (49.9%).
- Saskatchewan's population growth rate was 0.47%, the 2nd highest among provinces after Alberta (0.50%), and above the national average of 0.36%.
- Inter-provincially, Saskatchewan had a net gain of 1,027 people from other provinces for the 15th consecutive quarterly increase. This was the 3rd highest quarterly gain in the country, after Alberta (+2,820) and British Columbia (+1,962).
- Saskatchewan gained population, particularly from Ontario (564), Quebec (282), and Manitoba (150), and experienced population loss to British Columbia (-149).
- Over the past twelve months (July 1, 2009 to June 30, 2010), Saskatchewan's population increased by 16,498 people (1.6%). Saskatchewan's growth rate of 1.6% is the highest of any province in Canada.



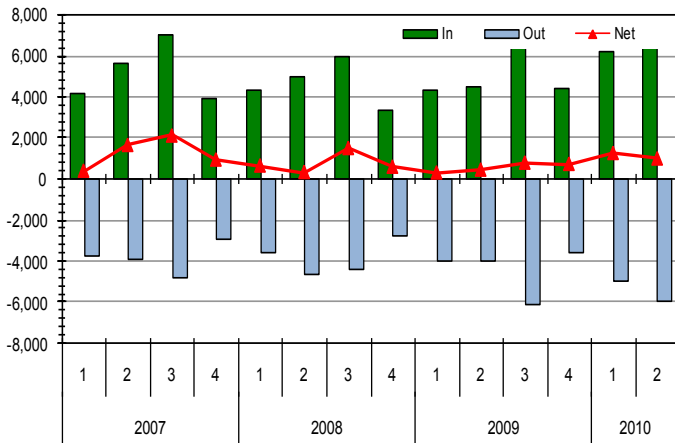
Quarterly Estimates of Demographic Components, Saskatchewan, 2007 to 2010													
Year	Date	Population	Quarter	Population Change	Natural Increase			Interprovincial Migration			International Migration		
					Births	Deaths	Net	In	Out	Net	In*	Out**	Net
2007	Jan-01	994,149	Q1	2,003	3,104	2,324	780	4,147	3,720	427	940	144	796
	Apr-01	996,152	Q2	4,105	3,370	2,133	1,237	5,615	3,924	1,691	1,355	178	1,177
	Jul-01	1,000,257	Q3	4,739	3,510	2,251	1,259	7,000	4,847	2,153	1,598	271	1,327
	Oct-01	1,004,996	Q4	2,541	3,264	2,354	910	3,920	2,946	974	825	168	657
2008	Jan-01	1,007,537	Q1	2,763	3,179	2,359	820	4,293	3,611	682	1,405	144	1,261
	Apr-01	1,010,300	Q2	3,492	3,453	2,164	1,289	4,984	4,622	362	2,006	165	1,841
	Jul-01	1,013,792	Q3	4,535	3,589	2,283	1,306	5,939	4,399	1,540	1,962	273	1,689
	Oct-01	1,018,327	Q4	3,127	3,341	2,386	955	3,368	2,743	625	1,719	172	1,547
2009	Jan-01	1,021,454	Q1	3,237	3,262	2,390	872	4,321	3,983	338	2,174	147	2,027
	Apr-01	1,024,691	Q2	4,433	3,547	2,191	1,356	4,499	4,019	480	2,765	168	2,597
	Jul-01	1,029,124	Q3	4,722	3,691	2,310	1,381	6,983	6,160	823	2,794	276	2,518
	Oct-01	1,033,846	Q4	3,126	3,436	2,417	1,019	4,380	3,618	762	1,517	172	1,345
2010	Jan-01	1,036,972	Q1	3,763	3,351	2,422	929	6,243	4,946	1,297	1,684	147	1,537
	Apr-01	1,040,735	Q2	4,887	3,644	2,221	1,423	6,966	5,939	1,027	2,605	168	2,437
	Jul-01	1,045,622											

* Includes immigrants, returning emigrants and net non-permanent residents.

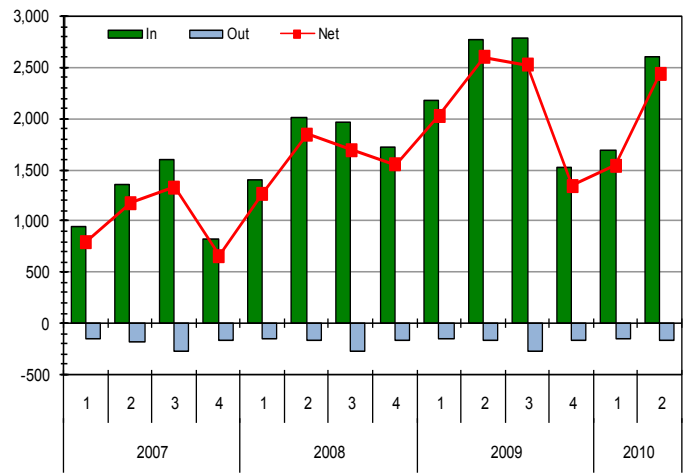
** Includes emigrants and net temporary emigrants.



Inter-Provincial Migration by Quarter, Saskatchewan, Quarter 1, 2007 to Quarter 2, 2010



International Migration by Quarter, Saskatchewan, Quarter 1, 2007 to Quarter 2, 2010

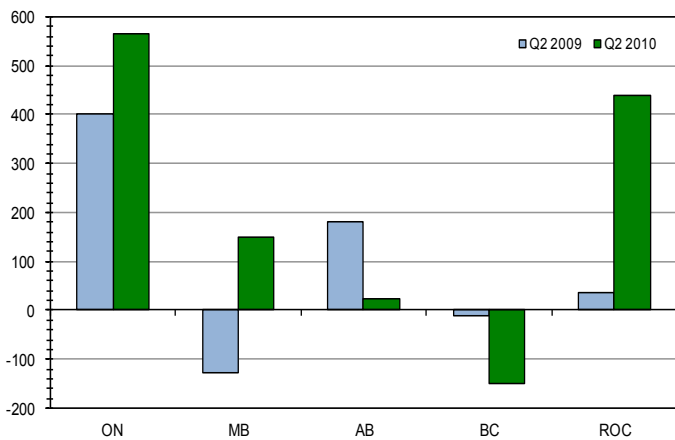


Interprovincial Population Exchange between Saskatchewan and the Rest of Canada, Quarter 2, 2010

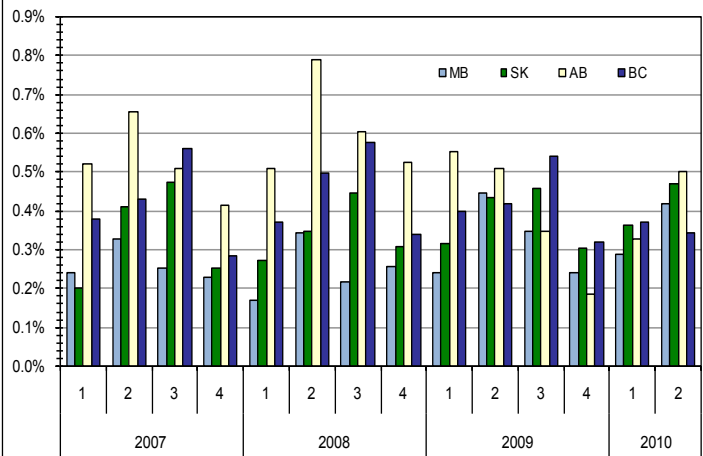
	NL	PEI	NS	NB	QC	ON	MB	SK	AB	BC	YT	NWT	NT	Total
In to SK	25	42	87	93	350	1,354	774	0	3,217	907	36	70	11	6,966
Out from SK	0	36	76	33	68	790	624	0	3,194	1,056	22	12	28	5,939
Net	25	6	11	60	282	564	150	0	23	-149	14	58	-17	1,027

For example: In Q2 2010, 3,217 people moved to Saskatchewan from Alberta and 3,194 people moved from Saskatchewan to Alberta. The difference was a net gain of 23 people for Saskatchewan.

Net Interprovincial Migration to Saskatchewan, Select Jurisdictions, Quarter 2, 2009 and Quarter 2, 2010



Quarterly Population Growth Rates, Western Canada, Quarter 1, 2007 to Quarter 2, 2010



Note:

International migration represents movement of population between Canada and a foreign country which involves a change in the usual place of residence. A distinction is made with regard to **immigrants (+)**, **emigrants (-)**, **returning emigrants (+)**, **net temporary emigrants (-)** and **net non-permanent residents (+)**.

Interprovincial migration represents movement from one province or territory involving a permanent change in residence. A person who takes up residence in another province or territory is an **out-migrant** with reference to the province or territory of origin and an **in-migrant** with reference to the province or territory of destination.

