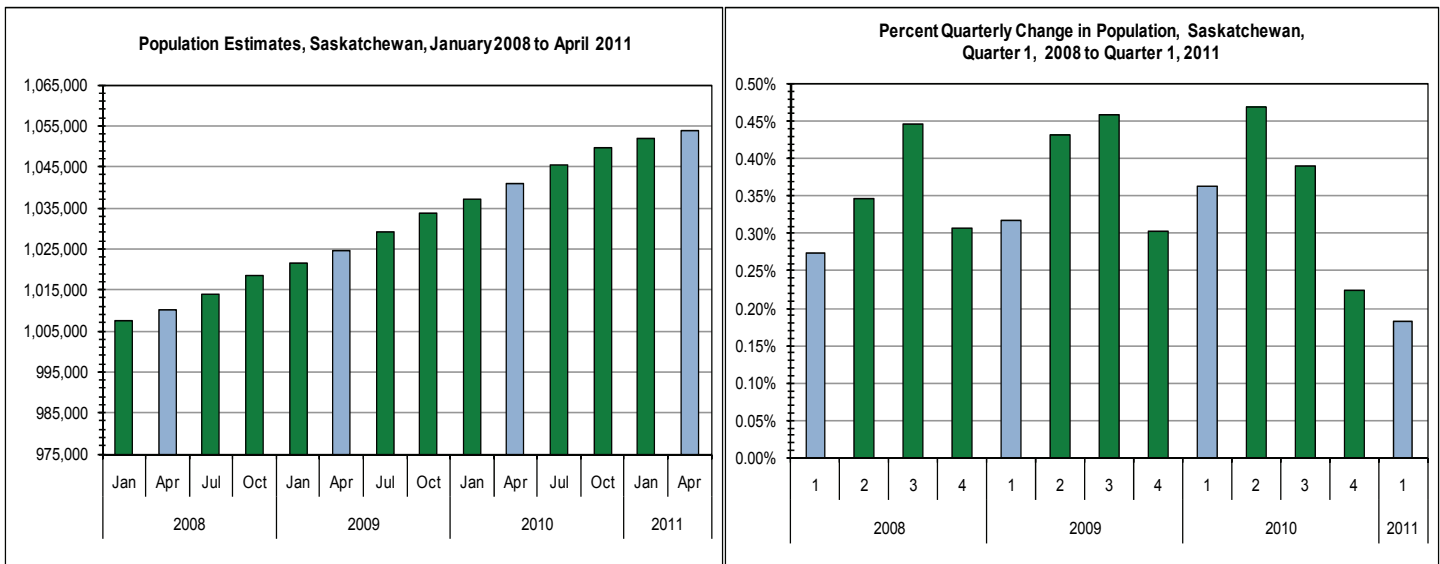


Saskatchewan Quarterly Population Report — Quarter 1, 2011

Released June 22, 2011

- Saskatchewan's population reached a record high of 1,053,960 as of April 1, 2011, an increase of 1,910 people during the first quarter. The province has had 20 consecutive quarterly population increases.
- Saskatchewan's population growth rate was 0.18%, the 6th highest among provinces (tied with Quebec) and below the national average of 0.21%.
- Saskatchewan's population gain is attributed to a natural increase of 983 (51.5% of the population gain) and net international migration of 1,520 (79.6%) that was offset by net inter-provincial out-migration of 593 (-31.0%).
- Inter-provincially, Saskatchewan had a net loss of 593 people to other provinces, the first quarterly decrease after 17 consecutive quarterly increases.
- Saskatchewan's population gains from other provinces were largely from Ontario (+267) and Nova Scotia (+78), with a net loss to Alberta (-734) and British Columbia (-372).
- Over the past twelve months (April 1, 2010 to April 1, 2011), Saskatchewan's population increased by 13,225 people. Saskatchewan's growth rate of 1.27% was the 4th highest among provinces (Alberta had the highest growth rate at 1.51%).



Quarterly Estimates of Demographic Components, Saskatchewan, 2008 to 2011

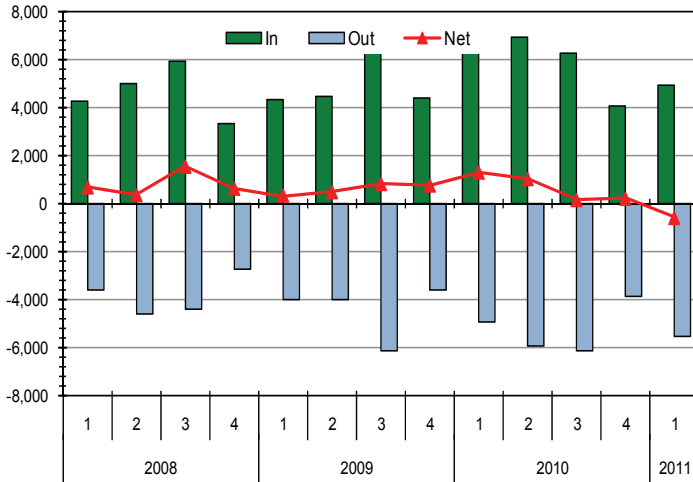
Year	Date	Population	Quarter	Population Change	Natural Increase			Interprovincial Migration			International Migration		
					Births	Deaths	Net	In	Out	Net	In*	Out**	Net
2008	Jan-01	1,007,537	Q1	2,763	3,179	2,359	820	4,293	3,611	682	1,405	144	1,261
	Apr-01	1,010,300	Q2	3,492	3,453	2,164	1,289	4,984	4,622	362	2,006	165	1,841
	Jul-01	1,013,792	Q3	4,535	3,589	2,283	1,306	5,939	4,399	1,540	1,962	273	1,689
	Oct-01	1,018,327	Q4	3,127	3,341	2,386	955	3,368	2,743	625	1,719	172	1,547
2009	Jan-01	1,021,454	Q1	3,237	3,262	2,390	872	4,321	3,983	338	2,174	147	2,027
	Apr-01	1,024,691	Q2	4,433	3,547	2,191	1,356	4,499	4,019	480	2,765	168	2,597
	Jul-01	1,029,124	Q3	4,722	3,691	2,310	1,381	6,983	6,160	823	2,794	276	2,518
	Oct-01	1,033,846	Q4	3,126	3,436	2,417	1,019	4,380	3,618	762	1,517	172	1,345
2010	Jan-01	1,036,972	Q1	3,763	3,351	2,422	929	6,243	4,946	1,297	1,684	147	1,537
	Apr-01	1,040,735	Q2	4,887	3,644	2,221	1,423	6,966	5,939	1,027	2,605	168	2,437
	Jul-01	1,045,622	Q3	4,079	3,799	2,345	1,454	6,269	6,113	156	2,747	278	2,469
	Oct-01	1,049,701	Q4	2,349	3,532	2,448	1,084	4,089	3,880	209	1,228	172	1,056
2011	Jan-01	1,052,050	Q1	1,910	3,434	2,451	983	4,961	5,554	-593	1,666	146	1,520
	Apr-01	1,053,960	Q2										

* Includes immigrants, returning emigrants and net non-permanent residents.

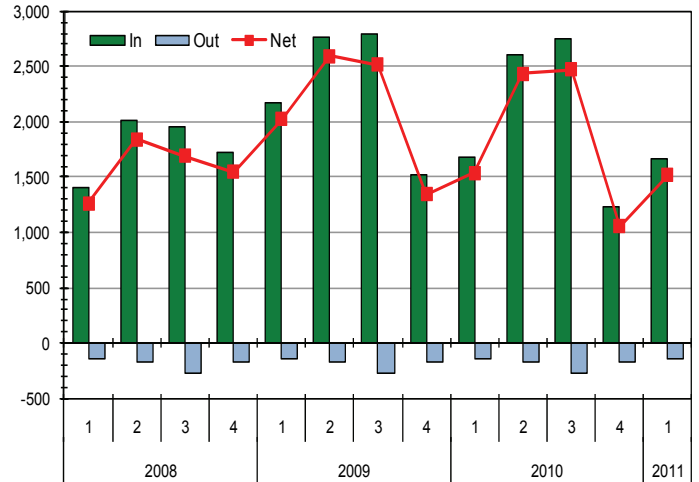
** Includes emigrants and net temporary emigrants.



Inter-Provincial Migration by Quarter, Saskatchewan, Quarter 1, 2008 to Quarter 1, 2011



International Migration by Quarter, Saskatchewan, Quarter 1, 2008 to Quarter 1, 2011

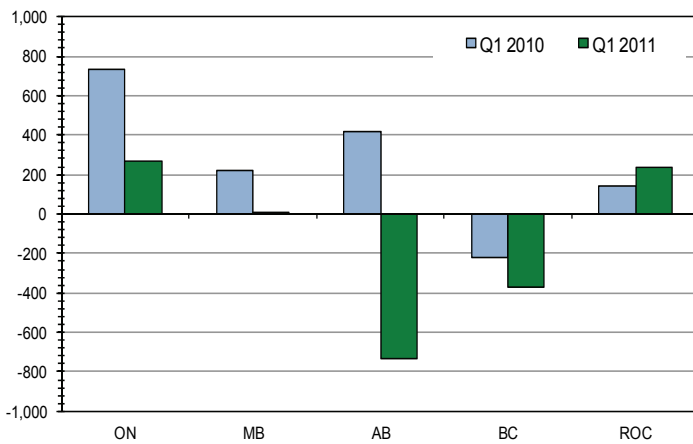


Interprovincial Population Exchange between Saskatchewan and the Rest of Canada, Quarter 1, 2011

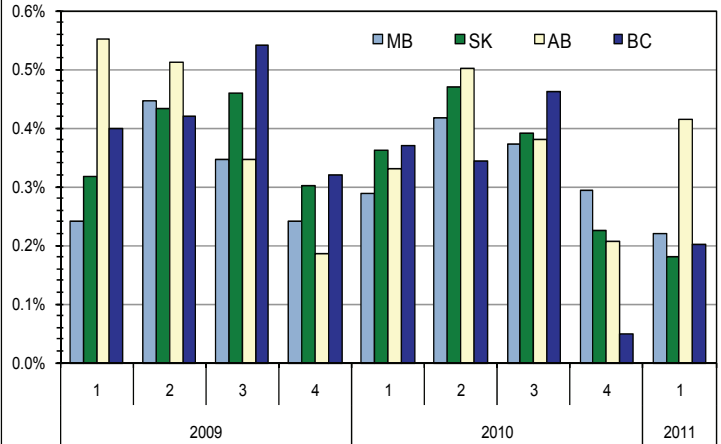
	NL	PEI	NS	NB	QC	ON	MB	SK	AB	BC	YT	NWT	NT	Total
In to SK	44	61	117	89	152	979	728	0	2,115	614	30	32	0	4,961
Out from SK	36	11	39	73	110	712	720	0	2,849	986	18	0	0	5,554
Net	8	50	78	16	42	267	8	0	-734	-372	12	32	0	-593

For example: In Q1 2011, 2,115 people moved to Saskatchewan from Alberta and 2,849 people moved from Saskatchewan to Alberta. The difference was a net loss of 734 people for Saskatchewan.

Net Interprovincial Migration to Saskatchewan, Select Jurisdictions, Quarter 1, 2010 and Quarter 1, 2011



Quarterly Population Growth Rates, Western Canada, Quarter 1, 2009 and Quarter 1, 2011



Note:

International migration represents movement of population between Canada and a foreign country which involves a change in the usual place of residence. A distinction is made with regard to **immigrants (+)**, **emigrants (-)**, **returning emigrants (+)**, **net temporary emigrants (-)** and **net non-permanent residents (+)**.

Interprovincial migration represents movement from one province or territory involving a permanent change in residence. A person who takes up residence in another province or territory is an **out-migrant** with reference to the province or territory of origin and an **in-migrant** with reference to the province or territory of destination.

